

KONE Automatic Sliding Door offering

KONE Sliding Door Operators feature a powerful, fully automatic door operator, suitable for single, double, telescopic, curved and prismatic doors. They can be adjusted for the demands of many environments.

APPLICATIONS

- Single & Double
- Telescopic
- Curved
- Prismatic

PROFILE SYSTEMS

- KONE SD 20S
- KONE SD 35S
- KONE SD Full glass

KONE Sliding Door Operator

Construction

Aluminum rail 160 mm high, supplied with an integrated running rail, clamped in low noise rubber and basic unit with a control unit, motor and carriers.

Operating modes

- Manually operated activators (push buttons and switches)
- Motion detectors
- Safety sensors
- Remote control
- Entrance control system
- Electronic program switch with LED display (optional)
- Wireless program switch

Program switch functions

- Automatic open & close
- Reduce opening width
- Sequence opening
- Reset functions
- Maintenance indicator to notify when door has reached programmed number of cycles
- Key switch with Euro cylinder to lock the program switch to prevent unauthorized use (optional)

Locking

- Electronic lock activated by the program switch. LED indication on the program switch shows locked positions (red LEDs)*
- At power failure the lock is standard locked
- Battery backup can be installed in case of power failure (optional)
- Mechanical lock; hook or bar lock with key use in door leaf (optional)
- Night switch for opening the door 1 time (key switch outside or push button inside) when door is electronically locked. After closing the door the electronic lock is activated again (optional)

Safety features

- Electronic safety reverse (highly sensitive reverse settings in both open and close directions)
- Finger trap safety (adjustable to avoid accidental finger trap)
- Photo cell safety (mounted in door opening, control unit tests during every door cycle)
- Door speed safety (automatically adjusted based on door weight and resistance)
- Power failure (all settings are stored in case of power failure)

Fire alarm functions (optional)

- Standard function is 'Door closes' while the photocell is switched off and the radar sensor remains active
- Door closes and manual operation
- Sequence doors (2 or more doors) settings can be cancelled
- Special programming by manufacturer



* Not on wireless program switch functions

Technical specification	Standard	Option
Drive type	Electromechanical sliding door drive	--
Line power	230V, 50 Hz, 2 Amp, 1 Phase	Battery pack: one 12V/0.8 Ah battery for one time opening
		Battery unit: 3 batteries of 12V/0.8Ah, all functionalities (limited time)
Power consumption	80 W	
Basic unit	With a DC motor in rubber buffer and adjustable tooth belt	
Control unit	Computerized self monitoring unit	
Programmable door speed, time & width.	Available	
Door weight	Single: 180 kg (max.) Double: 2 x 120 kg (max.)	Single: 270 kg (max.) Double: 2 x 180 kg (max.)
Cover	Aluminum design	Silver anodized, mill finish or coated in RAL color
Suspension system	Two 3D adjustable carriers per door leaf	
External connections	4 programmable inputs, 1 programmable output	Additional 4 inputs and 4 outputs.
Carriers	Steel carriers with synthetic rollers (smooth & noiseless running). Max. load: 60 kg/carrier	
Radars & sensors		1 and 2 way radar detectors, infrared motion detectors, safety sensors, photo cells (4 max.)
Certification: The KONE SD is TÜV approved and meets all international CE standards and safety regulations, if properly installed and maintained.		

KONE SD ECO Drive (optional)

Application

- To reduce warm or cold air loss and reduce temperature oscillations in building

Model

- Single and double sliding door
- Option: sequence door/air lock

Opening width (OW)

- Automatic OW based on outside temperature and people flow

Construction

- UniDrive control unit with ECO software module

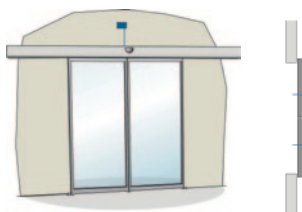
ECO module

- Control program in connection with temperature sensor and control of the door
- Provides automatic switching to reduce opening, sequence opening, reduce open time
- Opening width of the entrance is automatically increased at times of higher people flow
- Option: Control unit extension with wind speed meter for optimum performance

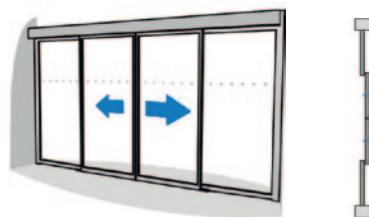
Air curtain

- Optional to connect for automatic regulation of the air flow

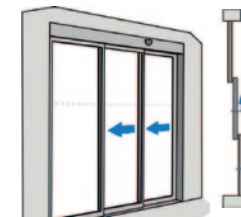
Sliding doors type



Double sliding door



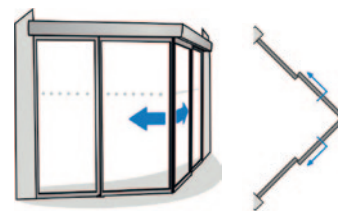
Double sliding door (with side- or fixed panels)



Single telescopic door



Curved sliding door



Prismatic sliding door

Profile System Technical Specification

Type	KONE SD 20S	KONE SD 35S	KONE SD Full Glass
Design	Tight, round and slim view	Tight, round and slim view	Slim view
Material	Aluminum AlMgSi 0.5 (22), DIN 1725, Dimensions DIN 1748	Aluminum AlMgSi 0.5 (606027F22), DIN 1725, Dimensions DIN 17615	Aluminum AlMgSi 0.5 (22), DIN 1725, Dimensions DIN 1748
Application	Single, double and telescopic doors	Single, double, telescopic and prismatic doors	Single and double doors
Glass	Toughened glass	Laminated, isolated and toughened glass	Toughened glass
Glass thickness (mm)	10 or 12	8 - 20	10 or 12
Vertical profile width (mm)	22	35	20
Horizontal profile width (mm)			
Top (mm)	70	50	70
Bottom (mm)	70	70	-
Profile thickness (mm)	24	31	16
Opening width (mm/max)		see table below	
Single door	1400		1400
Double door	2200		2200
Opening height (mm/max)	2300 * 10 2500 * 12	see table below	2200 * 10 2400 * 12
Midrail in panels	No	Yes	No

Note: take local wind situation into account i.e. for additional guidance

Additional information on KONE SD 35S		Max. opening width (OW)	
		Max. width x height	Max. width x height
Glass type	Glass thickness (mm)	SINGLE (mm)	DOUBLE (mm)
Laminated glass 4.4.2	8	950 x 2200	1800 x 2200
Laminated glass 5.5.2	10	950 x 2200	1800 x 2200
Laminated glass 5.5.2 + double vert. profile*	10	1000 x 2200	2000 x 2200
Laminated isolated glass 3.3.1 - 7 - 3.3.1	20	2200 x 2200 / 1900 x 2500	1100 x 2200 / 950 x 2500
Toughened glass 10 mm	10	1000 x 2300	2000 x 2300
Toughened glass 12 mm	12	1250 x 2500	2500 x 2500

* With extra vertical profile (profile on behalf of pin head lock) on both sides of the door leaf

- For all glass types; safety glass with beveled edges

- An additional bottom support profile is necessary when: 1. OW of a single door is > 1000mm
2. OW of a double door is > 2000mm
3. OW of other glazing is > 900mm (single) or >1800mm (double)

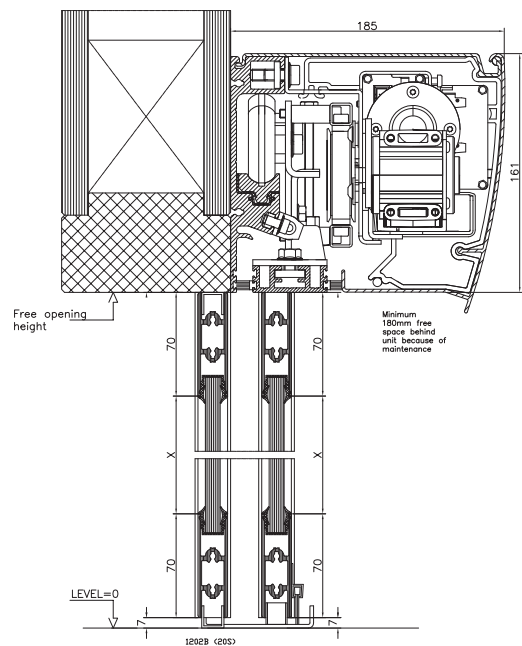
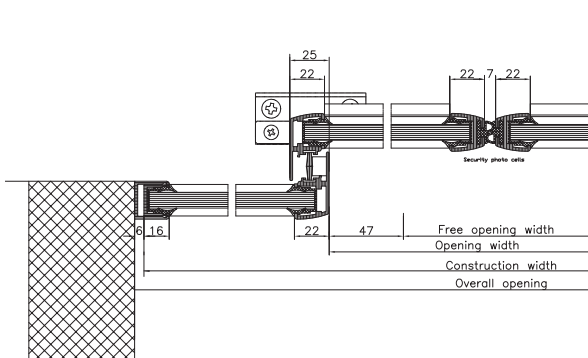
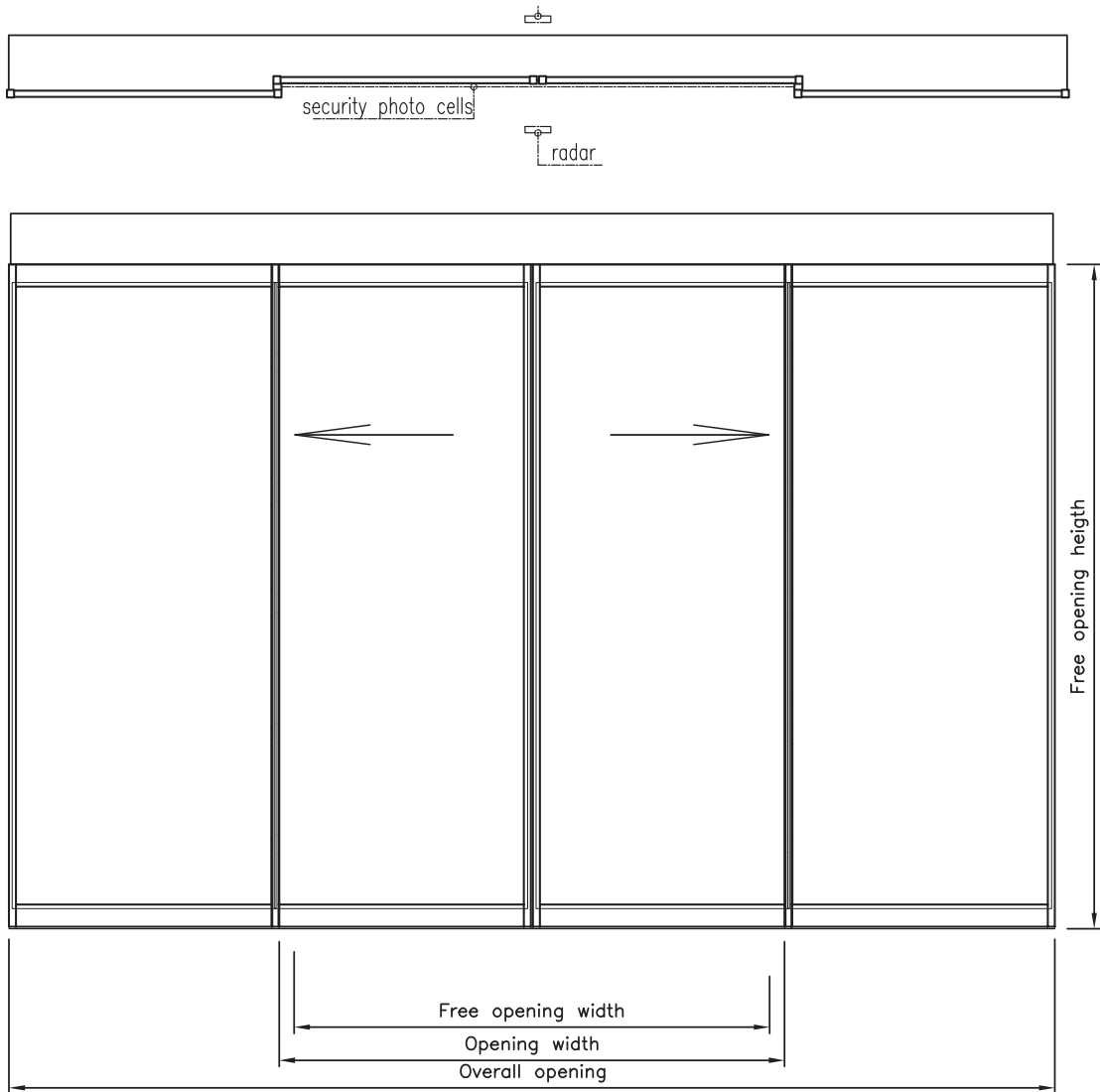
Other features	
Angle construction	Screwed
Wall profile	For side connection without side panels (only 35S profile system)
Draught prevention	Totally sealed with brushes and rubber gaskets
Glazing	Special developed system, dry glazing in rubber and without beading. For side as well as door panels
Surface	Mill finished, silver anodized or coated in RAL color
Accessories	The system is delivered including prefabricated panels, installation material and bottom supports
Extra	A midrail (only for 35 SD profile) and side panel inclusive installation material to create a complete shop front

Planning dimensions

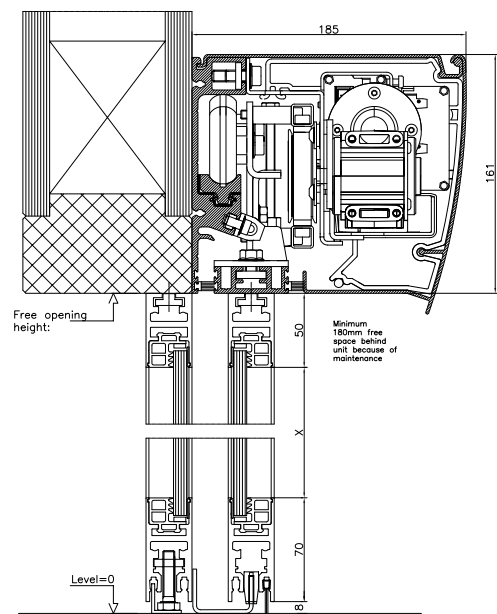
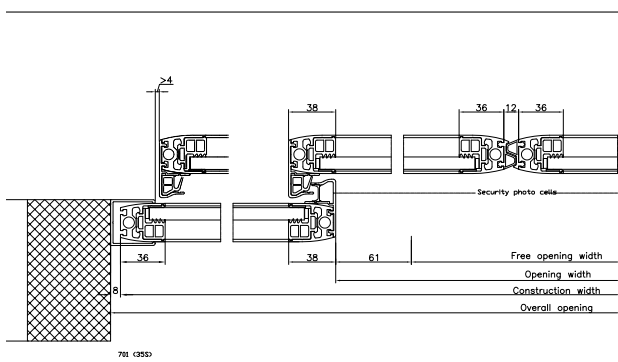
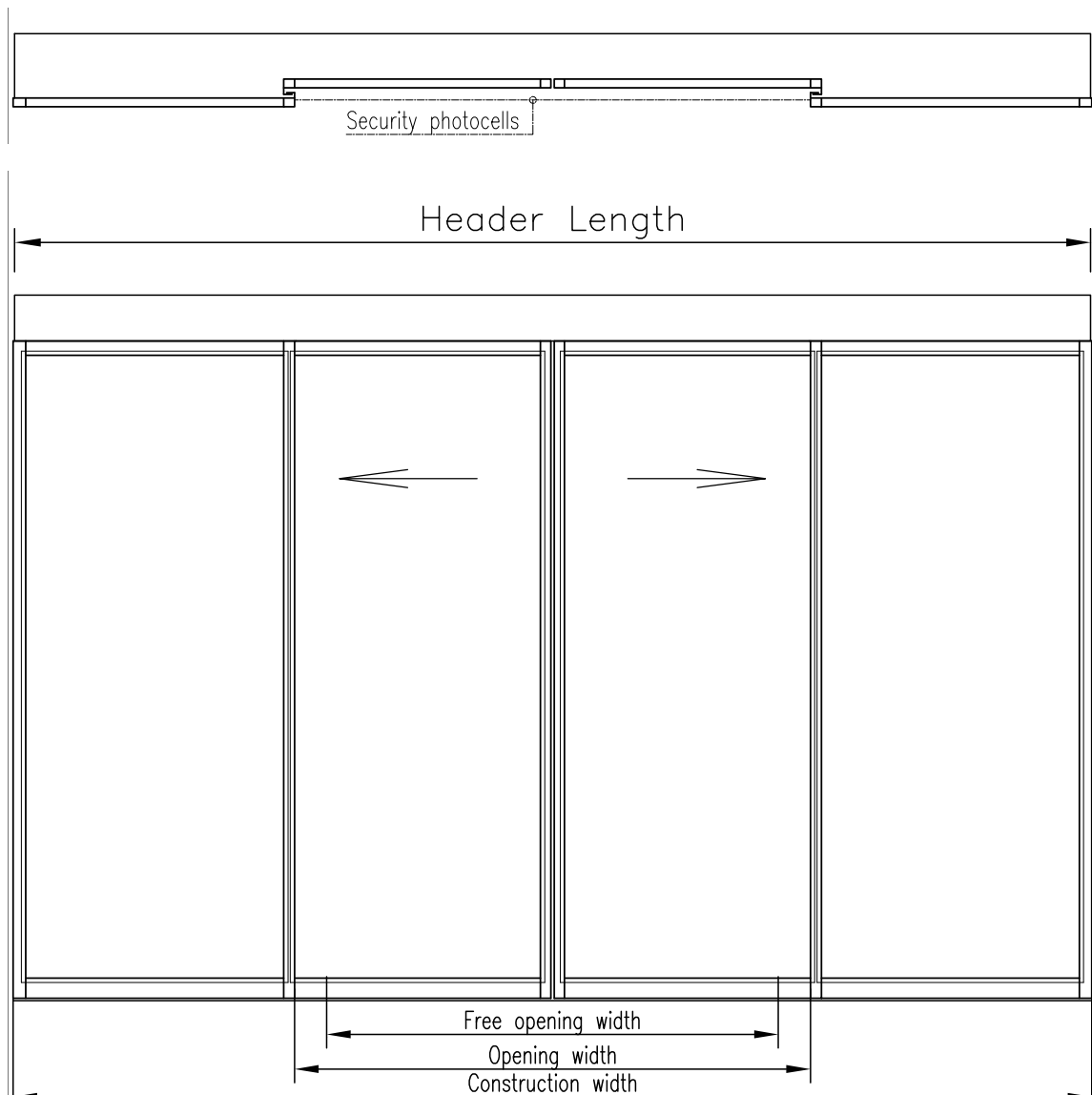
KONE SD 20S

Planning data.

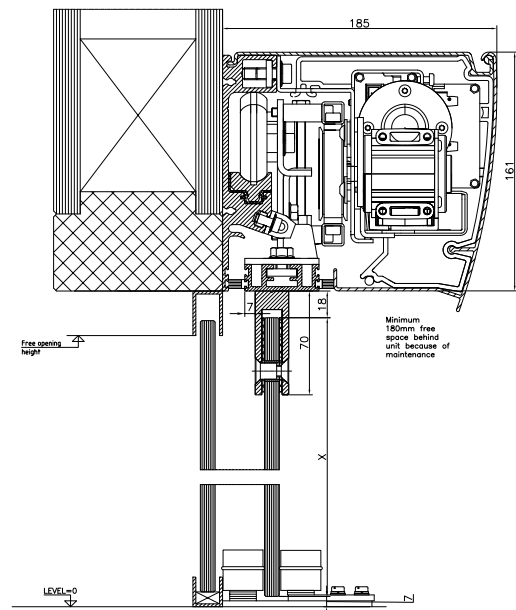
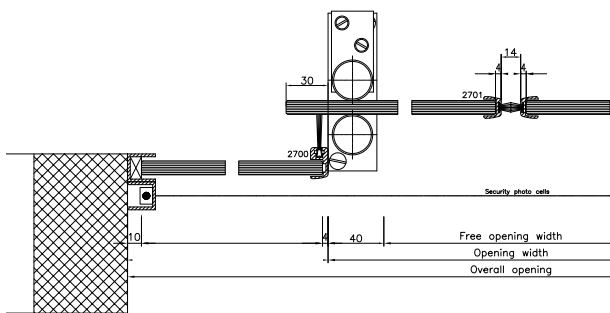
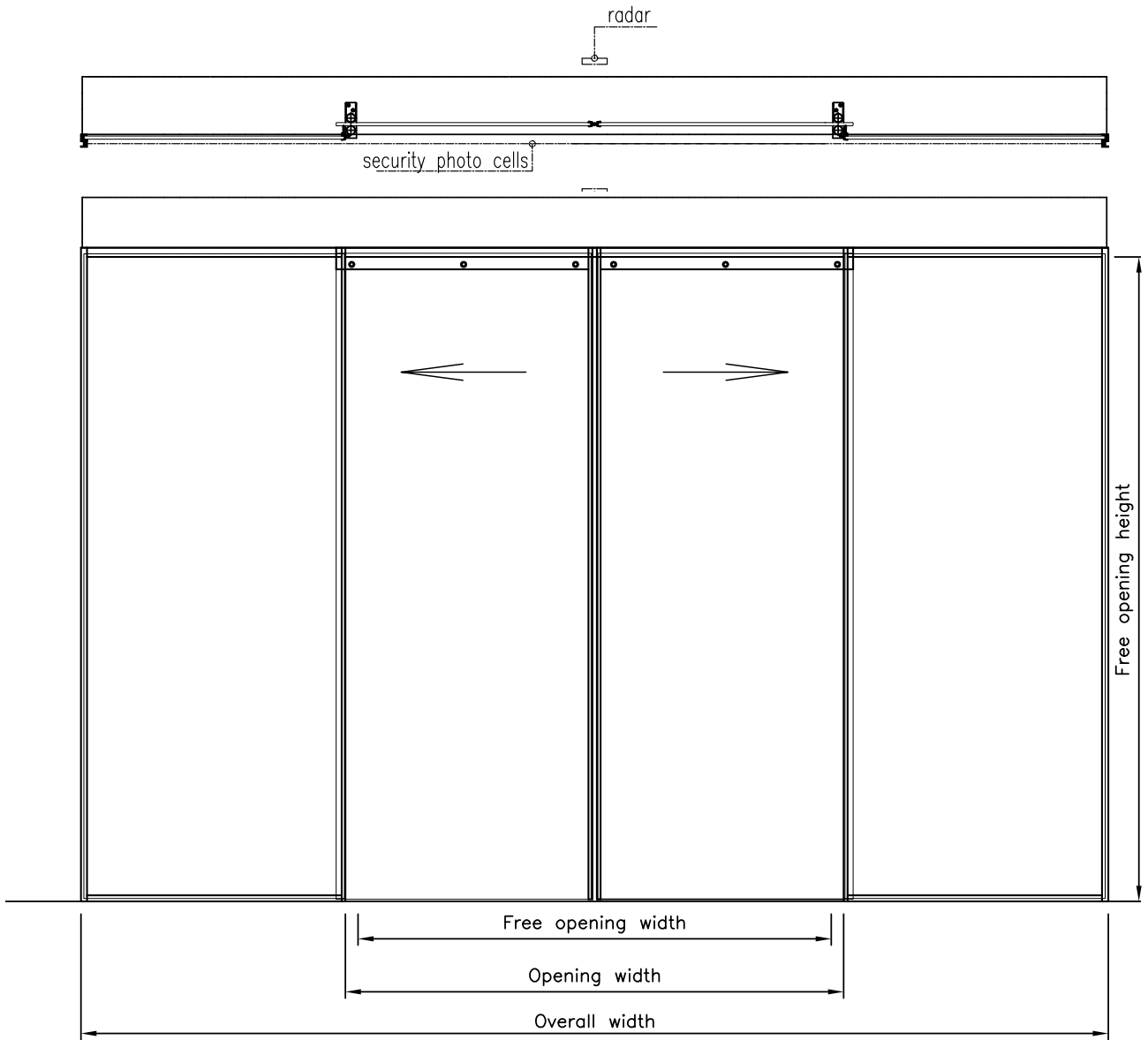
Below there are drawings of front-view , horizontal and vertical sections of sliding doors including side panels with different profile systems.



KONE SD 355



KONE SD FULL GLASS







KONE provides innovative and eco-efficient solutions for elevators, escalators and automatic building doors. We support our customers every step of the way; from design, manufacturing and installation to maintenance and modernization. KONE is a global leader in helping our customers manage the smooth flow of people and goods throughout their buildings.

Our commitment to customers is present in all KONE solutions. This makes us a reliable partner throughout the life-cycle of the building. We challenge the conventional wisdom of the industry. We are fast, flexible, and we have a well-deserved reputation as a technology leader, with such innovations as KONE UniDrive® and KONE Hermetic Sealing Doors. You can experience these innovations in architectural landmarks such as the Philips headquarters in Eindhoven, the Netherlands; the Metro Italia in Milan, Italy; the Sahlgrenska Sjukhuset hospital in Gothenburg, Sweden; and the Academic Medical Center in Amsterdam, the Netherlands.

KONE employs approximately 34,000 dedicated experts to serve you globally and locally in over 50 countries.

KONE Corporation
www.kone.com